

Urban Climate Resilience Program

Community Resilience Implementation Plan

PPR Beringin
Kuala Lumpur



UCRP Malaysia:
A collaboration
between



Powered by



Supported by



Authors & Acknowledgements

This Climate Resilience Implementation Plan for PPR Beringin has been developed by DBKL and C40 Cities with the valued support of the Z Zurich Foundation and Zurich Malaysia who actively contributed to the execution across this community programme.

We extend a deep heartfelt thanks to the Aurecon team, who have worked closely with our esteemed community of PPR Beringin to develop this vision and a plan going forward. This collaboration was developed through the collaboration of dedicated partners, community members, and technical experts committed to building a more resilient and inclusive future in PPR Beringin. We hope that it will inspire a future model for working with PPRs across Kuala Lumpur, Malaysia and beyond.

Community Resilience Implementation Plan Team

Kuala Lumpur City Hall (DBKL)

Dr. Umi Ahmad
Norhayati Binti Mat Said
Nur Azyan Fathiah binti Azman

C40

Lucy Petty
Neuni Farhad
Siti Hajar Madina

Aurecon Lestari Sdn. Bhd.

Fong Chuen Far
Ahmad Afandi Nor Azmi
Norazlin Nahar Azmi
Muhammad Zulfikri Mohd Suhardi

Zurich Malaysia

Hasfa Reny Hamid
Sheryl Rabai
Erin Hwang
Teresa Wong
Aslinda Aminuddin



Foreword

Climate change continues to present complex and urgent challenges for cities around the world, and Kuala Lumpur is no exception. Our communities, particularly those most vulnerable to floods, heatwaves, and other climate risks, require solutions that are targeted, inclusive, and sustainable. The Community Resilience Implementation Plan for PPR Beringin represent a significant step forward in our ongoing efforts to localise climate resilience that are led by the people we serve.

These plans are the result of months of close collaboration between community members, local authorities, and technical experts. Informed by climate risk assessments, community engagement sessions, and co-design workshops, the implementation plans reflect the lived realities, priorities, and aspirations of the communities they are designed to serve. They offer actionable strategies to strengthen community capacity, infrastructure, and well-being in the face of a changing climate.

This important milestone has been made possible through the Urban Climate Resilience Program (UCRP), a valuable partnership between Kuala Lumpur City Hall (DBKL), C40 Cities, the Z Zurich Foundation, and Zurich Malaysia. I extend my sincere appreciation to all departments, agencies, organisations and most importantly, the community members who contributed to the development of these plans. The collaboration highlights the strength of collective action in advancing urban sustainability. It is also grounded in the spirit of 4P; Public, Private, People, and Partnership.

More importantly, the implementation plan is also aligned with DBKL's 15 flagship programmes under our strategic implementation agenda. These flagship initiatives - ranging from climate adaptation and flood mitigation to smart mobility, inclusive public spaces, and community well-being, form the backbone of Kuala Lumpur's citywide transformation. They reinforce our vision to build a city that is more sustainable, resilient, liveable, and loveable for all.

As we move into the implementation phase, I urge all stakeholders to remain committed to this shared journey. Let us work together to bring these plans to life, strengthening Kuala Lumpur's resilience while ensuring that no community is left behind.

YBhg. Dato' Seri TPr. (Dr.) Maimunah binti Mohd Sharif
Mayor of Kuala Lumpur



Outline

<u>Background</u>	<u>5</u>
<u>Introducing PPR Beringin</u>	<u>6</u>
<u>PPR Beringin's Community Vision</u>	<u>12</u>
<u>Beating the Heat Together</u>	<u>14</u>
<u>Vibrant and Connected Neighbourhoods</u>	<u>19</u>
<u>Greening our Shared Spaces</u>	<u>28</u>
<u>Urban Farming for Local Livelihoods</u>	<u>35</u>
<u>Financially Empowered Communities</u>	<u>41</u>
<u>Flood Safe Community</u>	<u>44</u>
<u>Key Equalities Considerations</u>	<u>47</u>
<u>Conclusion and Next Steps</u>	<u>49</u>
<u>Glossary</u>	<u>50</u>

Background

The **Urban Climate Resilience Program (UCRP)** is designed to help cities protect their most vulnerable communities from the impacts of climate change. The focus is on working directly with climate vulnerable & economically disadvantaged communities in urban areas to understand the challenges they face and to build practical, locally driven solutions together.

In Kuala Lumpur, DBKL and local partners are supported by Zurich Malaysia and Z Zurich Foundation to support PPR Beringin against heat and flooding through a community-based approach. This includes assessing local risks, holding community workshops to capture their vision, and supporting the implementation of measures that improve daily living and strengthen resilience — such as awareness campaigns, infrastructure upgrades, and the planting of more trees and greenery. The goal is to make neighbourhoods safer, healthier, and better prepared for the future.

This document outlines the future vision for a climate ready PPR Beringin. Several projects and initiatives will support the community, especially the most vulnerable residents, to adapt and thrive under a changing climate, by improving economic security, health and livelihoods and wellbeing.

A collaboration between

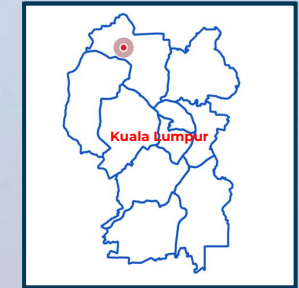


Introducing PPR Beringin

PPR Beringin is a public housing complex located in Jinjang Utara, Kuala Lumpur, approximately 10km north of the city centre. Developed in 2003 under the Program Perumahan Rakyat (PPR), it was as part of a government initiative to provide accessible housing for families in need of stable and affordable homes.

The complex consists of six 18-storey blocks with nearly 1,900 units, housing an estimated population of over 8,000 residents. Many households are tenants or residents who were part of government resettlement programmes. The majority of residents are Malay, and the community includes a mix of extended and nuclear families, with an average household size of 4.5 people.

The area is served by basic amenities such as community centres, eateries, and a mosque and a temple, and is connected to the wider city via local roads, RapidKL bus services, and the nearby Jinjang MRT station on the Putrajaya Line, located approximately 1.2 kilometres from the complex.



Key Plan



PPR Beringin in Numbers

2003

Building occupancy date

6

Residential blocks

18

Floors per block

1,896

Total no. of units

310

units per hectare

8,364

Estimated population

1,369

persons per hectare

4.5

Average household

RM1,500 – RM2,000

Median household income

60.2% Malay

17.4% Indian

14.6% Chinese

7.1% Others

Ethnic composition



Why PPR Beringin?

Why PPR Beringin?

PPR Beringin has been identified as one of the areas most at risk from heat under the KL Climate Action Plan 2050. The community consistently experiences high temperatures due to dense urban development, a significant number of vehicles, and limited green spaces. PPR Beringin frequently encounters the Urban Heat Island effect.

What Climate Risks Do Residents Face?

Residents regularly face **Extreme Heat** periods (such as Level 1 heatwaves, where temperatures reach 35–37°C). In addition, the community recently experienced a major flash flood in August 2024.

What makes the community more vulnerable?

Lower Household Incomes

- Median income: RM1,500–RM2,000 (below KL average)
- Many are employed in the informal sector or the gig economy
- Households in PPR Beringin commonly lack emergency savings for shock events.

High-Density Living

- More than 8,000 residents live in six 18-storey blocks, where ventilation is restricted, resulting in accumulated heat.

Health & Accessibility Risks

- Around 10% of households have at least one member with a disability.
- Vulnerable groups include the elderly, children, and people with disabilities

Infrastructure & Built Environment

- Lack of greenery increases the exposure to heat
- Existing drainage systems struggle to keep up with heavy rain

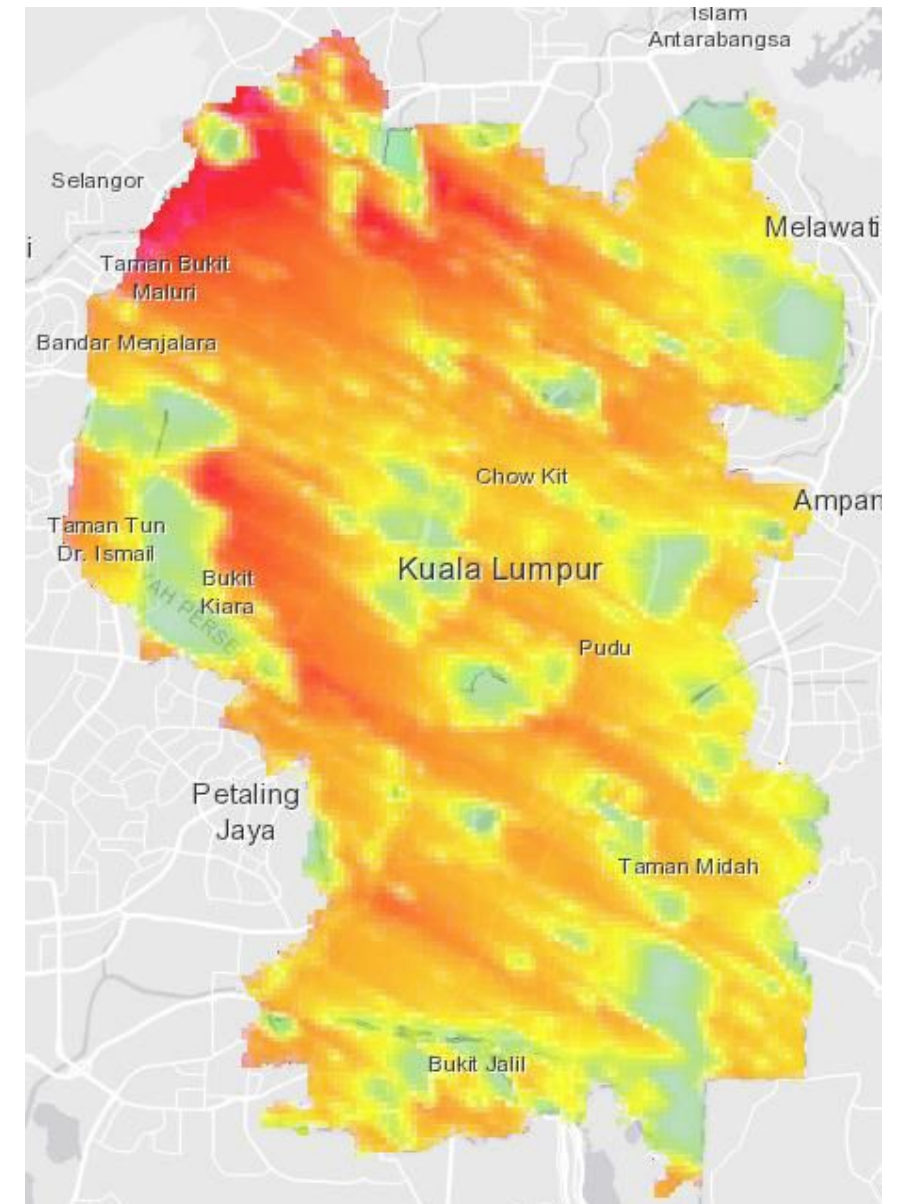




Figure 1: A significant flood incident occurred on 22 August 2024, when three hours of heavy downpour caused flooding in various parts of the blocks, particularly the playground and parking areas of Block E and F

Figure 2: Some parts of PPR Beringin have also shown signs of other physical hazards, such as land subsidence and minor sinkholes, which may be linked to prolonged water seepage and poor soil stability beneath paved surfaces.

Understanding PPR Beringin

The Urban Climate Resilience Program (UCRP), initiated in 2023, aims to understand the factors in PPR Beringin that increase its vulnerability to climate change.

In 2024, residents of PPR Beringin participated in a study to understand how the community deals with challenges such as floods and heatwaves. This was conducted through surveys, interviews with community leaders, and focus group discussions.

This study found that PPR Beringin is already strong in many ways — having active local leaders, good access to basic services, and high awareness of climate risks.

However, there are also some areas that need improvement:

- Many families have limited income and savings, making it harder to bounce back after a disaster.
- There are few shaded or green spaces, which makes the area hotter.
- Most outdoor workers suffer income losses during extreme heat or floods due to reduced work hours or property damage.

This is why we developed the **Community Resilience Implementation Plan** — to build on what is already strong, and take action where support is needed.

“There is too much concrete in our neighbourhood - we need more greenery and shade to cool things down.”

“Everytime it rains, the community feels anxious. We need urgent and long lasting flood solutions.”

“We need skills training and disaster preparedness teaching.”

“Let’s turn ideas into action. Time constraints and space limitations cannot hold back our community’s progress.”



Turning ideas into action

Through initial community workshops, the UCRP helped to identify 19 ideas to strengthen PPR Beringin's ability to cope with climate challenges. Next, we worked together to narrow down these ideas and choose the ones that are most practical and helpful for the community.

To do this, we:

- ✓ Assessed which ideas would have the most impact
- ✓ Talked to local people to prioritise actions that would help the most vulnerable
- ✓ Held co-creation workshops with DBKL, partners, and community members to identify which actions will have the most political support.
- ✓ Had follow-up meetings with relevant DBKL departments to secure commitments for delivery

From this process, six main projects were selected. Each project includes short term practical actions that will be rolled out step-by-step through to 2026, and long term action that still require financial support and political commitments for beyond.



6 Main Projects for PPR Beringin



Beating the Heat Together

Raising awareness and providing resources to help everyone cope during hot days.



Vibrant and Connected Neighbourhoods

Strengthening community ties through community spaces and access infrastructure.



Greening our Shared Spaces

Planting trees and adding green areas to make the neighbourhood cooler and more vibrant.



Urban Farming for Local Livelihoods

Turning empty spaces into thriving food gardens for everyday meals and local businesses.



Financially Empowered Community

Helping residents build savings and manage money to prepare for tough times.



Flood Safe Community

Reducing the impact of floods on property and daily life.

PPR Beringin's Community Vision



Beating the heat together

1. Community Cooling Centres



Vibrant and connected neighbourhoods

2. Vibrant Community Square
3. Community murals
4. Community stalls & markets
5. Shaded Walkways



Greening our shared spaces

6. Greenery
7. Pocket parks



Urban Farming for Local Livelihoods

8. Urban farming & garden plots



Financially empowered community

9. Financial Education Workshops



Flood safe community

10. Community Drainage Maintenance

Drainage Maintenance

Community Markets & Stalls

Urban Farming Plots

Increased Greenery

Vibrant Community Square

New cooling centres

Shaded walkways

Find more detailed proposals are found across the sections of this plan.

PPR Beringin's Resilience Projects

Project	Action List		
	Short Term (Up to 1 Year)	Medium Term (1-2 Years)	Long Term (2+ Years)
Definition	<i>Actions & 'Quick win' projects that can be implemented by the end of 2025. These are actions based on previous community initiatives supported by DBKL and therefore easier to rollout into PPR Beringin. Actions are low cost and funding is committed.</i>	<i>Actions that will take between 1-2 years to implement. These actions have established partners already identified and funding is likely to be committed.</i>	<i>Actions that will require long term partnerships and funding to implement.</i>
Beating the Heat Together	<ul style="list-style-type: none"> Community Heatwave Public Awareness Campaign Indoor Temperature Monitoring Scheme 	<ul style="list-style-type: none"> Establish Temporary Community Cooling Centers 	
Vibrant and Connected Neighbourhoods	<ul style="list-style-type: none"> Enhance the community square between Block A – D 	<ul style="list-style-type: none"> Develop a Community Spatial Plan 	<ul style="list-style-type: none"> Construction of Shaded Walkways
Greening our Shared Spaces	<ul style="list-style-type: none"> Community Cleaning and Greening Day Community Heat Mapping 	<ul style="list-style-type: none"> Design a Detailed Green Landscape Plan 	<ul style="list-style-type: none"> Implement Recreational Green Pockets
Urban Farming for Local Livelihoods	<ul style="list-style-type: none"> Identify and activate disused or vacant plots for community planting Expand training and provide basic tools to new urban farmers 	<ul style="list-style-type: none"> Establish community-run markets and co-ops to distribute produce and strengthen local food resilience 	<ul style="list-style-type: none"> Scale up vertical farming
Financially Empowered Communities	<ul style="list-style-type: none"> Community Financial Support Workshop <ul style="list-style-type: none"> Microfinancing Training Financial Education Training 	<ul style="list-style-type: none"> Community financial support scheme 	
Flood Safe Neighbourhood	<ul style="list-style-type: none"> Community Drainage Maintenance and Flood Awareness Initiative 	<ul style="list-style-type: none"> Investigate the underlying causes of the flooding 	

All project ideas in this report are subject to funding and resources being secured to progress delivery. This page sets out how delivery could be phased to deliver the full strategy. It is important that these projects can be delivered incrementally, as funding and resources become available. This will ensure that action is delivered in the short, medium and long term. However, it is equally important that these projects come forward in a coordinated manner and support one another.

Raising awareness and providing resources to help everyone cope during hot days.

Beating the Heat Together



To help residents stay safe and healthy during extreme heat by promoting heat-safe habits and creating cool, comfortable indoor spaces.

Why It Matters:

PPR Beringin is one of the areas in KL most affected by heat. Many residents have shared that the neighbourhood becomes very uncomfortable during heatwaves—especially for older adults, young children, and those with health issues.

With lots of tall buildings, limited greenery, and a large number of vulnerable residents, the heat can become dangerous. That's why this initiative will focus on practical ways to reduce heat stress—like awareness campaigns, tips for staying cool, and access to safe indoor spaces where residents can take a break from the heat.



Community Heatwave Awareness Campaign

A public awareness campaign will help residents of PPR Beringin stay safe during extreme heat. The campaign will share simple, practical tips on how to protect yourself and others—especially older adults, children, and those with health conditions—when temperatures rise.

What to Expect:

- Information on how heat affects health and what to look out for
- Easy steps you can take at home and in the community to stay cool
- Training sessions on heat safety and climate preparedness
- Encouragement to use shared cooling spaces when needed
- Support from community leaders and the Department of Health KL

Why It Matters:

Extreme heat affects us all, but some people feel it more than others. By raising awareness and working together, we can make PPR Beringin a safer, cooler place to live—especially during heatwaves.

Timeline

Short-term (up to 1 year)

Cost

Low



Briefings on the heatwave were conducted for the residents in May 2025

STAKEHOLDERS

- Residents of PPR Beringin
- Community Leaders especially block leaders
- DBKL (Department of Health & Environment, Department of City Planning)
- C40

Indoor Temperature Monitoring

A new program will help track indoor temperatures in selected homes at PPR Beringin using small, affordable sensors. These tools will collect real-time data on how hot it gets inside, especially during heatwaves.

Why It Matters:

Some homes get much hotter than others—but without knowing which ones, it's hard to help. By monitoring indoor temperatures, we can:

- Spot which homes are most at risk
- Plan better support and cooling solutions
- Raise awareness about heat risks inside the home
- Share tips to help everyone stay cool and safe

This is a community-led effort to better understand and manage heat in our daily lives—especially for the most vulnerable.

Time scale

Short-term (up to 1 year)

Cost

Low-Medium



A researcher from the UCRP in Melaka installing an indoor temperature monitor within a traditional Kampung home. The UCRP in Melaka is run by Resilient Cities Network.

STAKEHOLDERS

- Residents of PPR Beringin
- Community Leaders especially block leaders
- DBKL (Department of Health & Environment, Department of City Planning)
- C40

Establish Temporary Community Cooling Centres

The programme plans to turn existing hangout areas—like the semi-open lobbies at PPR Beringin—into cooling centres during hot weather. These spaces will be equipped with fans or other cooling systems to provide relief from extreme heat.

Why It Matters:

During heatwaves, many homes become too hot, especially for older residents, children, and those with health issues. These cooling centres will offer a safe, comfortable place to rest, stay cool, and connect with neighbours.

It's not just about comfort—it's about health, safety, and looking out for one another during extreme weather.

Time scale

Short-term (up to 1 year)

Cost

Medium



STAKEHOLDERS

Source: A cooling centre in Vancouver (Times of Malta, 2021)

- Residents of PPR Beringin
- Community Leaders especially block leaders
- DBKL (Department of Community Development & Urban Wellbeing)



Action Map

Establish Temporary Community Cooling Centers



The programme plans to turn existing hangout areas—like the semi-open lobbies at PPR Beringin—into cooling centres during hot weather. These spaces will be equipped with fans or other cooling systems to provide relief from extreme heat.

Legend

-  Improve current
-  Create new

Add on fan and other cooling systems



0 50 100 150 m

Strengthening community ties through community spaces and infrastructure

Vibrant and Connected Neighbourhoods



This action aims to make PPR Beringin a more vibrant, welcoming, and climate-friendly place to live. It focuses on improving shared spaces, creating better connections between housing blocks, and making sure residents have safe, cool, and inviting areas to gather, relax, and go about their day.

Why This Matters:

Many of the walkways and common areas in PPR Beringin aren't being used as much as they could be. Some are hard to reach, uncomfortable during hot or rainy weather, or simply don't feel like places where people want to spend time. This can make it harder for neighbours to connect, move around safely, or enjoy shared activities.

This initiative will:

- Bring life back to the central community square by making it a more active and people-friendly space.
- Work with residents to design better layouts for outdoor areas and pathways.
- Build shaded walkways and use heat-reducing features to make public spaces cooler, safer, and more comfortable.

By improving the physical environment together, the programme helps create a stronger sense of community and makes everyday life more enjoyable for everyone.



Enhance the Community Square (Block A – D)

The community square between Blocks A to D is a central gathering spot at PPR Beringin, often used for play, relaxation, and social events. But right now, it lacks shade and greenery, making it uncomfortable especially during hot weather. Many residents have shared that it could be much more welcoming, especially for children and families.

What We Aim to Do:

This upgrade will make the square a cooler, greener, and more family-friendly space. The improvements will help turn it into a vibrant hub where residents can come together comfortably, even on hot days.

Location:

The open space between Blocks A–D, already used for gatherings, informal play, and leisure.

Timeline

Short-term (up to 1 year)

Cost

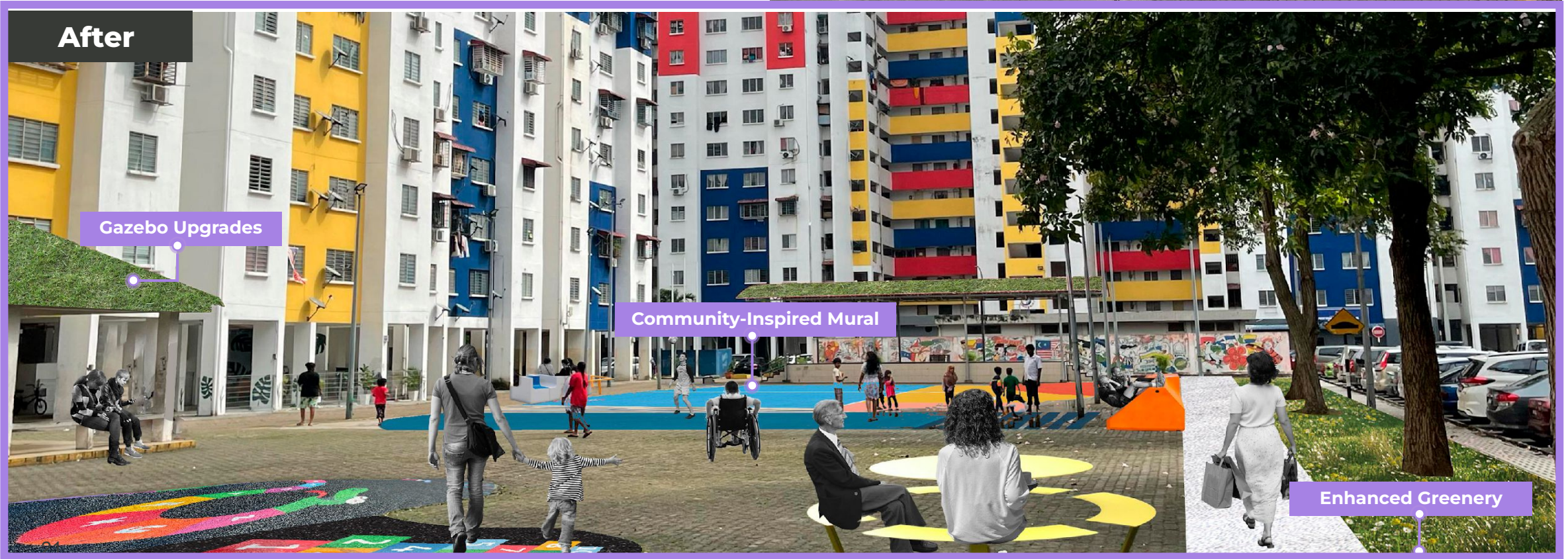
Medium



STAKEHOLDERS

- Residents of PPR Beringin - particularly the JMB, Residents' Association (RA) and Neighbourhood Watch (KRT)
- DBKL (Department of Community Development & Urban Wellbeing, Department of Landscape & Recreation Development)
- Community artists & local volunteers (Zurich Malaysia)
- Landscape contractors

Enhance the Community Square (Block A – D)



Enhance the Community Square (Block A – D)



Enhanced Greenery

Plant new shrubs near the existing tree to enrich the natural landscape.

Tree Planting

Proposed tree planting to provide shade, enrich greenery, and enhance the visual appeal of the area.



New Gazebo Installation & Gazebo Upgrades

Add a new gazebo beside the existing one with waterproof roofing, built-in seating, and improved rain protection.



Community-Inspired Mural

Create a vibrant mural on the community square, designed by a local artist with community involvement.

Community Spatial Plan

We want to create a plan that reflects what you, the residents, need and want for the public spaces and pathways in PPR Beringin. This plan will highlight key areas like gathering spaces, walkways, and places that could be improved. It will focus on working together to find solutions and develop a shared vision for the future of the neighbourhood.

What Will Happen:

Through workshops and conversations, we'll listen to your ideas and identify any challenges, opportunities, and dreams for improving our community. Together, we'll map out the most important spaces and plan improvements for the future.

Location:

The entire PPR Beringin area, including all six residential blocks, shared spaces, walkways, and important spots like the mosque, school, and shops.

Timeline

Medium Term (1-2 Years)

Cost

Low - Medium



STAKEHOLDERS

- Residents of PPR Beringin - particularly the JMB, Residents' Association (RA) and Neighbourhood Watch (KRT)
- DBKL (Department of Community Development & Urban Wellbeing)
- Planning consultants

Construction of Shaded Walkways

Context

Currently, there is only one shaded walkway at SRA Abu Dzar Al-Ghifari, and it doesn't connect to the residential blocks, so most residents have to walk in the sun or rain when going between buildings. This makes it uncomfortable and even unsafe, especially for older residents, children, and others who may have health challenges.

What We Want to Do:

We plan to create a network of shaded walkways that will connect all six blocks (A to F) and link important spots like the central community square, school, mosque, and other places residents use every day. This will make it safer, cooler, and more comfortable for everyone to get around, encouraging more walking and outdoor activity.

Location:

Key walkways between all residential blocks, prioritising connections to essential places like the community square, school, mosque, and local shops.

Timeline

Long Term (2+ Years)

Cost

High



STAKEHOLDERS

- Residents of PPR Beringin - particularly the Joint Management Body (JMB), Residents' Association (RA) and Neighbourhood Watch (KRT)
- DBKL (Department of Community Development & Urban Wellbeing, Department of Urban Transport)
- School management (SRA Abu Dzar Al-Ghifari)
- Potential partners.

Action Map

Construction of Shaded Walkways



Shaded Walkways

Design and construction of new shaded walkways connecting all blocks and key facilities

Legend

-  Proposed Shaded Walkways
-  Existing Road Network
-  Cul de sac
-  Existing Bus Stop



Existing Shaded Walkways

The shaded walkway extends from SRA Abu Dzar Al-Ghifari to a nearby bus stop, but it lacks a direct connection to the residential area.





Construction of Shaded Walkways



Benchmark

Singapore



Planting trees and adding green areas to make the neighbourhood cooler and more welcoming.

Greening our Shared Spaces



This initiative aims to improve the quality and climate resilience of outdoor spaces by bringing more nature into PPR Beringin.

Why It's Important:

Many of the shared outdoor spaces don't get used as much as they could because they lack green areas and are not designed to be comfortable. This makes it harder for residents to enjoy them, especially during heatwaves when the sun makes the heat even more intense. By adding more greenery and developing small pocket parks, we can create cooler, more inviting spaces for everyone.

What We'll Do:

This project will involve the community in improving our outdoor spaces, making them more welcoming and useful for all ages. It will also teach residents how to care for the environment, helping to adapt to the changing climate.

This green space project will:

- Encourage residents to get involved in making our neighbourhood more beautiful.
- Provide cooler, safer areas for people to gather and relax.
- Promote healthy activities and help bring the community together.



Community Cleaning and Greening Day

We're organizing a day of action to improve PPR Beringin's green spaces and transform unused areas into beautiful, green spots for everyone to enjoy. This event will give all residents a chance to get involved, take pride in our neighbourhood, and make a real difference through hands-on participation.

Why It Matters:

By coming together to clean up and add more greenery, we can help create a more inviting and comfortable environment. The day will also include urban farming workshops, teaching us about the importance of nature, how we can care for our environment, and how to grow food right here in our own community. This will help everyone, from kids to seniors, feel connected to the space and take ownership of it.

Location:

Throughout PPR Beringin, across all residential areas and shared spaces.

Timeline

Short-term (up to 1 year)

Cost

Low



STAKEHOLDERS

- Residents of PPR Beringin - particularly the Joint Management Body (JMB)
- Residents' Association (RA) and Neighbourhood Watch (KRT)
- DBKL (Department of Community Development & Urban Wellbeing, Department of Landscape & Recreation Development, Local Agenda 21)
- C40
- Zurich Malaysia (volunteers)

Community Heat Mapping

The programme will work together with the community to identify the areas in PPR Beringin that are most affected by extreme heat. Using simple tools and local knowledge, we will map out spots that get too hot, like busy walkways, open spaces without shade, and areas where the sun's heat gets trapped.

Why It Matters:

By understanding where the heat is most intense, we can focus on making those areas cooler and more comfortable for everyone. This project will guide us in adding more greenery, shade, and cooling features to reduce heat and help make PPR Beringin a safer, more pleasant place to live—especially during those hot days.

Location:

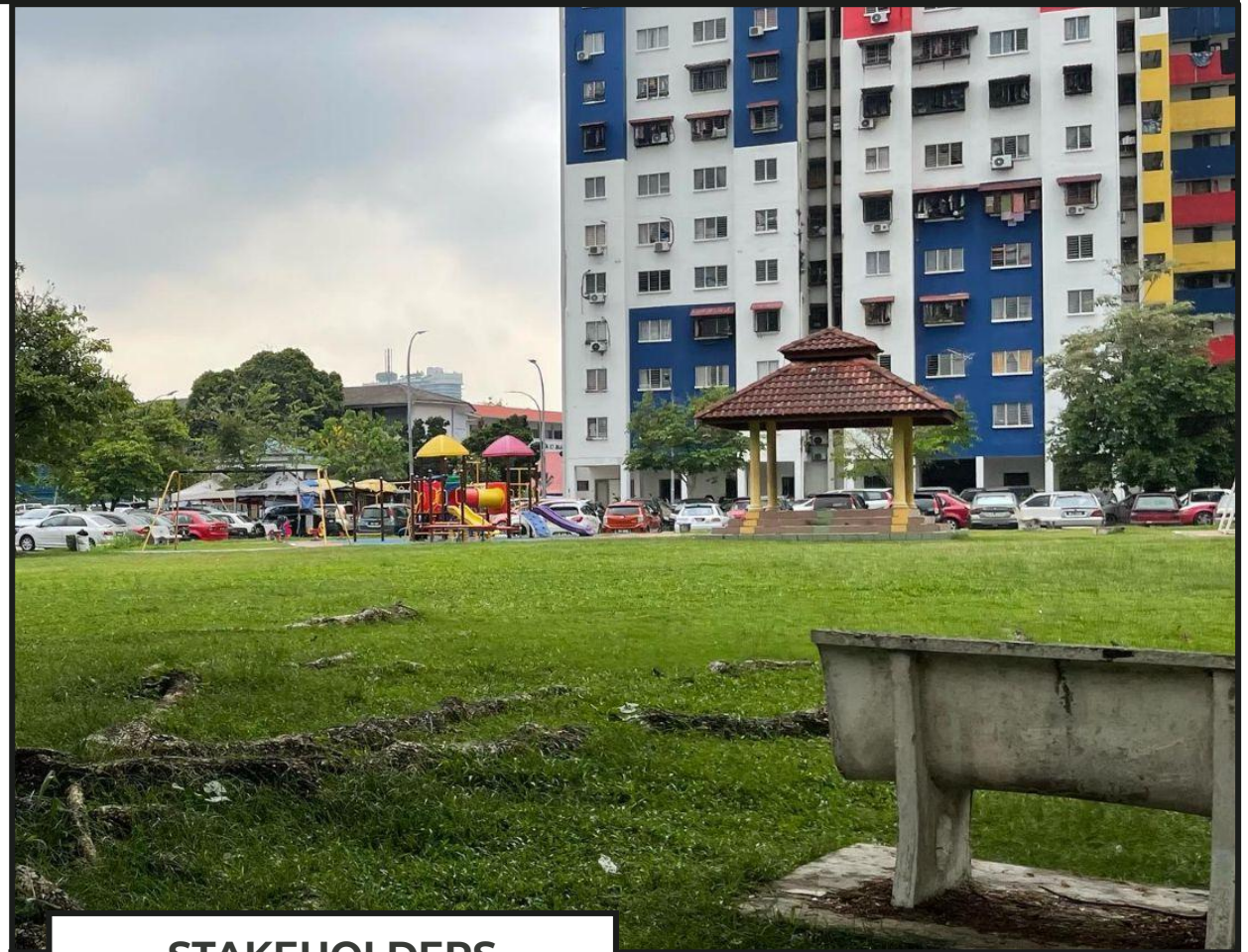
Across all of PPR Beringin, covering key outdoor areas.

Timeline

Short-term (up to 1 year)

Cost

Low - Medium



STAKEHOLDERS

- Residents of PPR Beringin - particularly the Joint Management Body (JMB),
- Residents' Association (RA) and Neighbourhood Watch (KRT)
- DBKL (Department of Community Development & Urban Wellbeing, Department of City Planning, Department of Health & Environment)
- C40

Design a Detailed Green Landscape Plan

A landscape plan will be developed with DBKL and partners to identify key greening areas, suitable plant species, and maintenance strategies for PPR Beringin. Community stewards will be appointed to support upkeep, alongside greening workshops to build local capacity. The plan aligns with DBKL's Green and Blue Corridor and Pocket Parks programmes and supports the goals of the Kuala Lumpur Climate Action Plan 2050.

Why It Matters:

Designing a detailed and strategic Green Landscape Plan is essential for enhancing urban greenery, promoting ecological sustainability, and empowering communities by providing a clear roadmap for long-term environmental stewardship and landscape development

Location:

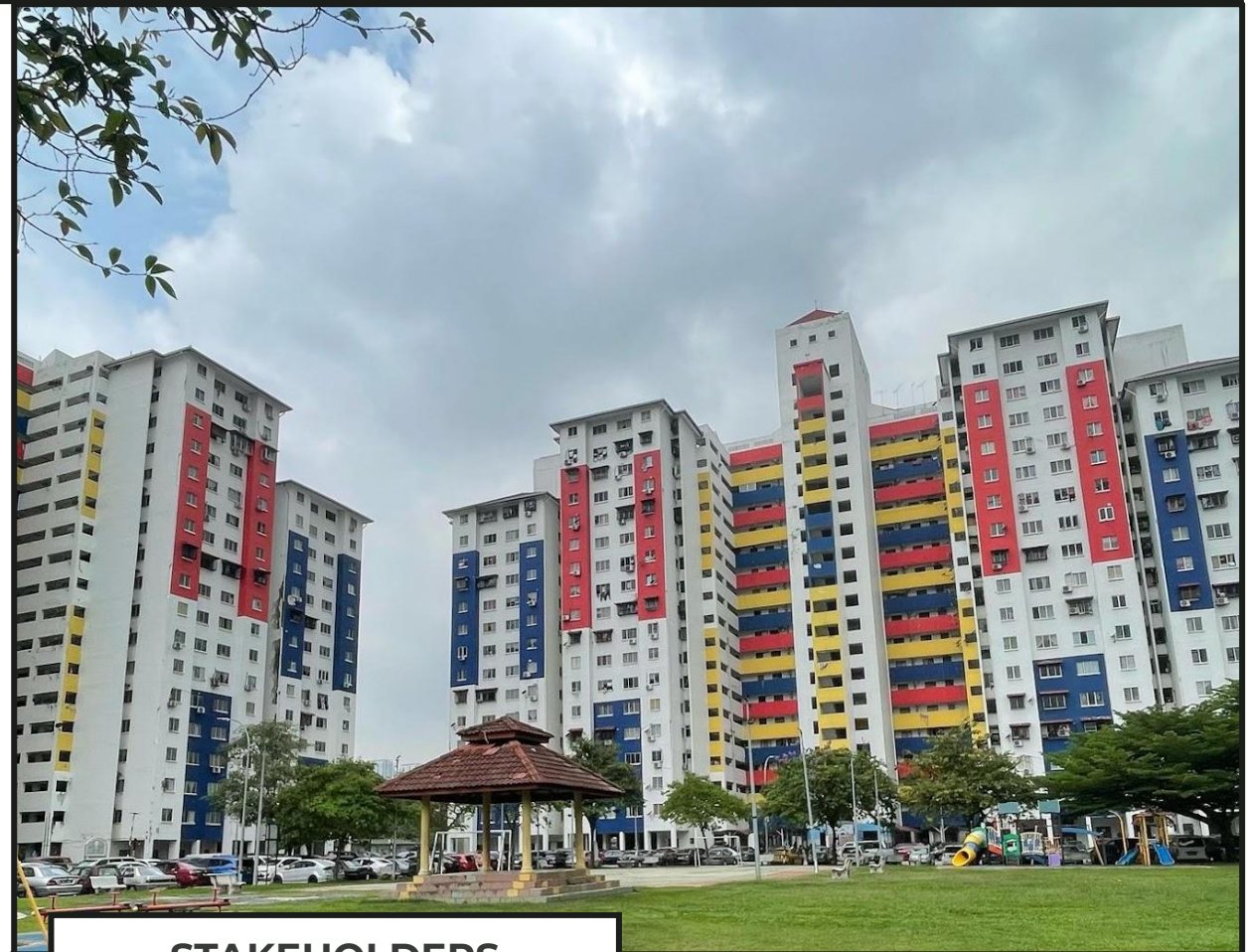
Across all of PPR Beringin, covering key outdoor areas.

Timeline

Medium-term (1-2 years)

Cost

Low - Medium



STAKEHOLDERS

- Residents of PPR Beringin (particularly the Joint Management Body (JMB),
- Residents' Association (RA) and Neighbourhood Watch)
- DBKL (Department of Landscape and Recreation Development)
- C40

Green Pocket Parks

As part of our Green Landscape Plan, the programme aims to create new green spaces in PPR Beringin, pocket parks that turn unused areas into welcoming spots for relaxation and play. These spaces will offer everyone a place to unwind, enjoy nature, and benefit from a greener environment.

Why It Matters:

By transforming underused spaces into community-friendly parks, there will be more room for outdoor activities, socialising, and connecting with nature. The first priority will be areas next to the Community Urban Farm, bringing even more greenery and life to the neighbourhood. These green spaces will not only improve the environment but also promote health and well-being for all residents.

Location:

Throughout PPR Beringin, with a focus on areas next to the Community Urban Farm.

Timeline

Long term (more than 2 years)

Cost

Medium - High



STAKEHOLDERS

- Residents of PPR Beringin - particularly the Joint Management Body (JMB),
- Residents' Association (RA) and Neighbourhood Watch (KRT)
- DBKL (Department of Community Development & Urban Wellbeing, Department of Landscape & Recreation Development)
- C40

Action Map

Implement Recreational Green Pockets

Exhibit: Court next to the Community Urban Farm



Community Pop-up Market

Host a Community Pop-up Market consists of structured, legal space for small vendors



Exercise Corners

Develop a compact recreational node near the futsal court for families and seniors, equipped with open-air exercise equipment and reflexology paths.



Inviting green pockets parks

Create small green areas with seating to encourage community use beyond just parking.



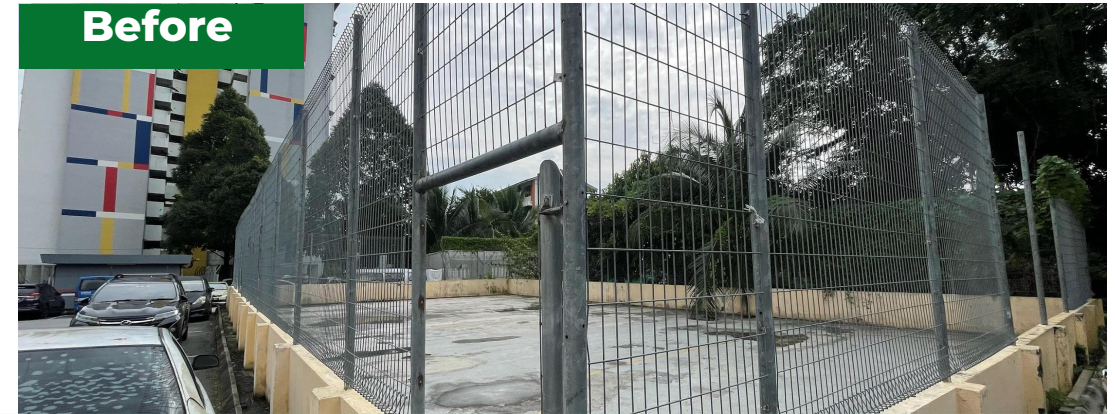
Green Alley Transformation from Parking Space

Convert a seldom-used parking lane into a shaded green alley with vertical gardens, permeable paving, and benches.

Activating Community Spaces

Top right: Image of the current futsal court

Below: Visualisation of a greening transformation of the futsal court



Turning empty spaces into thriving food gardens — for everyday meals and local businesses.

Urban Farming for Local Livelihoods



To strengthen food security, support local income, and help the community grow by expanding urban farming opportunities.

Why It's Important:

Growing more food locally is a top priority for residents of PPR Beringin. Expanding the urban farm will not only provide fresh, healthy food but also create opportunities for income generation, helping families become more resilient in the face of floods and extreme heat. The community has also shown interest in selling produce, creating a new source of income to support households.

Additionally, increasing the number of plants and green spaces through community farming will cool down the area, reduce heat from concrete, and improve the overall environment, making PPR Beringin a more comfortable place to live.



Activating Vacant Plots for Community Planting

PPR Beringin has already seen great informal planting, showing that there's a strong interest in urban farming. This initiative will take that community energy and turn it into something even bigger. We'll officially organise the planting efforts by identifying vacant plots, giving people dedicated spaces to plant, offering training and resources, and encouraging everyone to get involved.

Why It Matters:

By turning unused spaces into productive, green areas, we can grow food, create more green space, and strengthen the community. This project not only helps us grow fresh produce but also brings residents together, supports sustainability, and makes PPR Beringin a cooler, more pleasant place to live.

Timeline

Short term (up to 1 year)

Cost

Medium



STAKEHOLDERS

- Residents of PPR Beringin - particularly the Joint Management Body (JMB)
- Residents' Association (RA) and Neighbourhood Watch (KRT)
- DBKL (Department of Community Development & Urban Wellbeing, Department of Landscape & Recreation Development, Local Agenda 21)

Action Map



Identify and activate disused or vacant plots for community planting

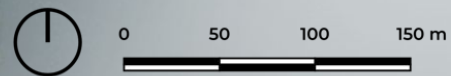
Community Garden under MAIWP



Community Garden under LA21

Legend

-  Official Garden
-  Unofficial Garden



Training and Tools for New Urban Farmers

We plan to offer training sessions and providing basic tools to help new urban farmers in PPR Beringin get started. These sessions will teach practical farming techniques that are easy to maintain, as well as how to work together as a community to manage and sustain the urban farm. The goal is to make sure that the community can take care of the farm independently in the long term, without relying on outside funding.

Why It Matters:

By learning how to grow food sustainably and manage the farm together, we can ensure that the urban farm remains a source of fresh food and a valuable community resource for years to come. This will also help us build food security, self-sufficiency, and a sense of pride in working together to take care of the shared space.

Timeline

Short-term (up to 1 year)

Estimated Cost

Low



STAKEHOLDERS

- Residents of PPR Beringin - particularly the Joint Management Body (JMB)
- Residents' Association (RA) and Neighbourhood Watch (KRT)
- DBKL (Department of Community Development & Urban Wellbeing, Department of Landscape & Recreation Development, Local Agenda 21)
- Department of Agriculture Kuala Lumpur (DOA)

Community Markets & Co-ops for Local Produce

The programme plans to set up community-run markets and co-ops where residents can sell the fruits, vegetables, and herbs they grow. This gives everyone a chance to earn extra income, support each other, and make fresh, local food more available within PPR Beringin.

Why It Matters:

These markets and co-ops will help reduce household spending on food, support local livelihoods, and strengthen our food resilience. It's a great way to turn community farming into real economic opportunities—while building stronger connections among neighbours and promoting a more self-sufficient neighbourhood.

Time scale

Medium Term (1-2 Years)

Cost

Low



STAKEHOLDERS

- Residents of PPR Beringin - particularly the Joint Management Body (JMB)
- Residents' Association (RA) and Neighbourhood Watch (KRT)
- DBKL (Department of Community Development & Urban Wellbeing, Department of Landscape & Recreation Development, Local Agenda 21)
- Department of Agriculture Kuala Lumpur (DOA)

Grow More with Vertical Farming

To expand the adoption of vertical farming systems within urban gardens through the installation of modular hydroponic towers, supported by training, technical supervision, and access to inputs and tools. This aims to maximise yield in limited spaces while promoting sustainable, soil-free cultivation techniques.

Why It Matters:

By using walls and rooftops for gardening, we can grow more food right here at home, reduce grocery costs, and support a greener, more sustainable neighbourhood. This helps build community resilience, especially during times of climate challenges.

Time scale

Long term (2+ years)

Cost

Low



STAKEHOLDERS

- Residents of PPR Beringin - particularly the Joint Management Body (JMB)
- Residents' Association (RA) and Neighbourhood Watch (KRT)
- DBKL (Department of Community Development & Urban Wellbeing, Department of Landscape & Recreation Development, Local Agenda 21)
- Department of Agriculture Kuala Lumpur (DOA)

Helping residents build savings and manage money to prepare for tough times

Financially Empowered Communities



The programme seeks to help residents of PPR Beringin feel more financially secure and better prepared to face everyday challenges. It will offer practical tools, friendly advice, and access to small business support and microcredit options to help people manage their money, grow their income, and support their families.

Why This Matters

Many families in PPR Beringin are already working hard to make ends meet—but floods and extreme heat are making it even tougher. Floods can damage shops, homes, and vehicles, while heatwaves can lead to higher electricity bills and fewer working hours, especially for outdoor workers.

Community members—especially older residents and outdoor workers—have shared that they need support not just to recover from these disruptions, but to build a more secure and lasting income.

That's why the programme will focus on:

- Sharing easy-to-understand financial tips and guidance.
- Connecting local entrepreneurs with small loans and resources to grow their businesses.
- Creating a new community support system to help families stay cool during heatwaves—without the financial strain.



Microfinance Training

This training is designed for both existing small business owners in PPR Beringin and residents who are thinking about starting their own businesses. It will provide the basics needed to understand and access microloans—small loans that can help grow a business or kick-start a new idea. By supporting local entrepreneurs, the programme hopes to help families earn more, reduce financial stress, and create more stable livelihoods for the whole community.

Training duration: One to two days training

Financial Education Training

Learning how to manage money well is an important step toward building a more secure future. These community workshops will help residents make the most of their income by focusing on smart spending, saving for the future, and preparing for unexpected events like floods or heatwaves. The sessions will be practical, easy to follow, and led by experienced trainers from groups like Universiti Malaya Community Engagement Centre (UMCares), Pepper Labs, and other supportive partners.

Training duration: Half a day training

Timeline

Short-term (up to 1 year)

Cost

Low



STAKEHOLDERS

- DBKL (Department of Housing & Urban Well-being and Local Agenda 21)
- Department of Federal Territory (JWP)
- Tekun Nasional
- UMCares
- Pepper Labs

Financial Support Scheme

This new community-led programme is here to help families in PPR Beringin save money and access small, low-cost loans when they need it most—especially during tough times like floods or heatwaves. It's about building a stronger, more supportive neighbourhood where no one has to face financial stress alone.

How It Will Work:

- **Listening First:** We'll start with a simple survey to hear your thoughts and understand what kind of support would help most.
- **Designed With You:** The financial support system will be shaped by your ideas and needs, so it works for our community.
- **Practical Money Tips:** Friendly workshops will help you learn how to manage your money, save more, and plan ahead.
- **Starting Fund:** A shared fund will be set up to help those facing urgent financial challenges.
- **Run by the Community:** The scheme will be managed openly, with regular updates and clear guidelines.
- **Get Involved:** We'll spread the word through flyers, social media, and neighbour-to-neighbour sharing—so everyone can take part.

Timeline

Medium Term (1-2 years)

Cost

Medium



STAKEHOLDERS

- Residents of PPR Beringin
- DBKL (Department of Housing & Urban Well-being and Local Agenda 21)
- Zurich Malaysia
- Universiti Malaya Community Engagement Centre (UMCares)
- Pepper Labs

Reducing the impact of floods on homes and daily life.

Flood Safe Neighbourhood



To reduce the impact of flash floods in PPR Beringin and protect homes, health, and daily life.

Why It Matters:

Flooding is a serious and ongoing issue in PPR Beringin, especially for residents in Blocks E and F. Many have shared how floods disrupt daily routines, damage property, and affect their health and income. These challenges are even harder for families already managing financial stress. Floods also lead to problems like water pollution, blocked drains, and even land sinking in certain spots.

This initiative focuses on making our neighbourhood better prepared for heavy rain and flash floods so we can protect what matters most and reduce the stress and costs caused by these events.



Community Drainage Maintenance and Flood Awareness Initiative

We'll be organizing a *gotong-royong* (community clean-up) to clear blocked drains and improve the flow of water, especially around Blocks E and F. These efforts will be complemented by flood awareness sessions, focusing on community-based response actions and proper channels for reporting flood incidents and damages.

Why It Matters:

Clogged drains increase the risk of flooding, especially in areas that are already vulnerable. By working together to clear the blockages, we can help reduce flood risks, protect our homes, while promoting environmental responsibility, and inclusive participation among residents of all age groups and abilities.

Duration

One to two days

Timeline

Short-term (up to 1 year)

Cost

Low



STAKEHOLDERS

- Residents of PPR Beringin, particularly Joint Management Body (JMB) and residents in Block E and F
- DBKL (Department of Community Development & Urban Wellbeing, Department of Health and Environment, Local Agenda 21)

Investigate the underlying causes of the flooding

DBKL will carry out a comprehensive investigation to determine the root causes of flooding in PPR Beringin, examining factors such as drainage capacity, land use, and rainfall patterns. The findings will guide targeted actions to reduce flood risks and support long-term mitigation planning.

Why It Matters:

The investigation is crucial to identify the root causes of flooding and inform the development of comprehensive, long-term flood mitigation measures.

Location:

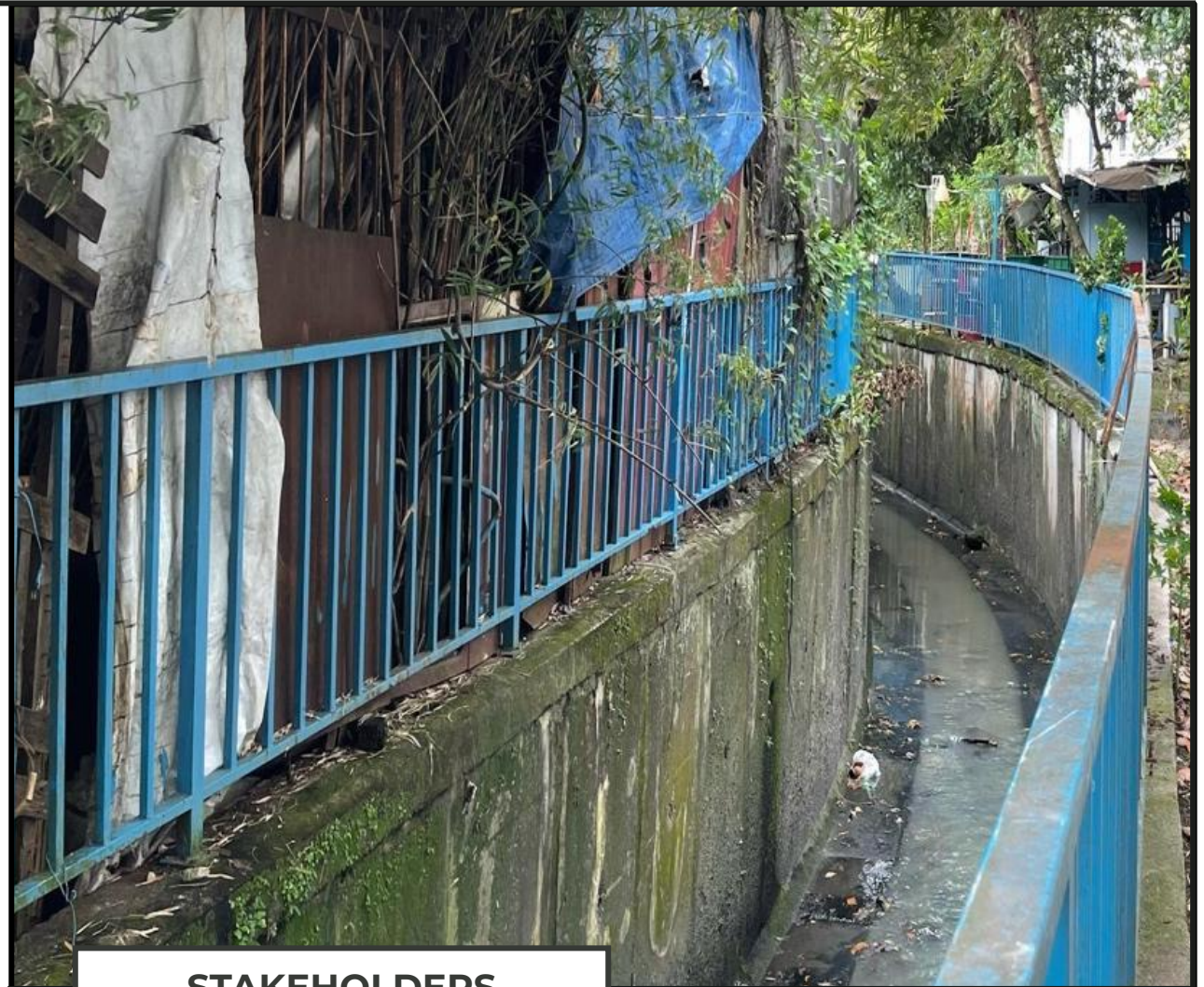
Two key points along the main drain in PPR Beringin.

Timeline

Medium term (1-2 year)

Cost

Low



STAKEHOLDERS

- Residents of PPR Beringin particularly Joint Management Body (JMB) and Residents of Block F and E
- DBKL (Department of Civil Engineering and Drainage)

Key Equalities Considerations

Given the community's diverse makeup, it is essential that all interventions are inclusive, accessible, and responsive to the needs of vulnerable populations. The table below highlights key equalities considerations across the six community projects.

Group	Key Equalities Considerations	Impact	Related Projects/Actions
Age	Tailor activities and infrastructure for both children and elderly (e.g. safe spaces, training, cooling access).	Positive	Projects 1, 2, 4, 5
Disability	Ensure all physical upgrades (walkways, cooling centres) are fully accessible; inclusive signage and design.	Positive	Projects 1, 2
Gender	Equitable participation in leadership, financial training, and food-growing initiatives; address gendered needs.	Positive	Projects 2, 4, 5, 6
Race	Use multilingual communication; ensure inclusive visuals and cultural representation in public art and design.	Positive	Projects 1, 2
Religion and Belief	Schedule events sensitively around religious practices; ensure shared spaces accommodate diverse beliefs.	Positive	Projects 1, 2
Pregnancy and Maternity	Provide shaded seating, cooling centres, and accessible routes for pregnant individuals and young families.	Positive	Projects 1, 2
Financially Vulnerable Households	Prioritise access to financial literacy, energy-efficient appliances, and climate resilience resources.	Positive	Projects 1, 5, 6
Children and Youth	Provide safe outdoor spaces, youth-friendly training, and targeted awareness campaigns.	Positive	Projects 1, 2, 3
Elderly	Cooling centres, walkways, and emergency planning tailored to limited mobility and higher heat risk.	Positive	Projects 1, 2, 6

Key Equalities Considerations

Given the community's diverse makeup, it is essential that all interventions are inclusive, accessible, and responsive to the needs of vulnerable populations. The table below highlights key equalities considerations across the six community projects.

Group	Key Equalities Considerations	Impact	Related Projects/Actions
Informal/Gig Economy Workers	Include access to microfinancing, savings tools, and emergency income support schemes.	Positive	Project 5
Migrants/ Stateless Individuals	Ensure communication is accessible and services are inclusive regardless of documentation status.	Positive	Projects 1, 5
Single-Parent Households	Child-friendly infrastructure and time-flexible training sessions; targeted financial support.	Positive	Projects 2, 5
Unemployed/ Underemployed	Provide pathways to participation through training (urban farming, financial literacy), market access, and co-ops.	Positive	Projects 4, 5
Digitally Excluded	Use offline methods (e.g. posters, community leaders, in-person workshops) for alerts, training, and awareness building.	Neutral	Projects 1, 5
Flood-Prone Communities	Improve flood risk awareness, access to flood prevention measures, and resilience planning for flood-related hazards.	Positive	Project 6 (Flood-Safer Community)

Conclusion and Next Steps

As PPR Beringin continues to confront the growing challenges of climate change, especially extreme heat, the **Community Resilience Implementation Plan sets a critical foundation for building a safer, more adaptive, and thriving community**. The collaborative effort involved in crafting this plan reflects a shared vision to protect lives, livelihoods, and the local environment while empowering residents with tools and knowledge for long-term resilience.



Expected outcome from this Plan

- Improved PPR Beringin natural and built environment that enhance community well-being
- Increased awareness, capacity and community ownership among residents, with stronger public participation in resilience-building activities
- Enhanced collaboration and synergies between local communities, government, NGOs and other partners.
- Stronger alignment of local development efforts with climate goals and agenda, including support for the KL CAP 2050 and the SDGs.
- Scalable good practices and lessons that can be replicated in other PPRs and urban communities, and used to inform future policies and urban planning

Immediate Next steps

To translate this plan into action, the following steps will be prioritised:

- **Capacity building** Establish a local climate resilience task force with representation from residents, government, and technical experts.
- **Funding & Partnerships** Identify and secure funding opportunities from public and private sectors, NGOs, and international climate adaptation funds.
- **Pilot Projects Implementation** Roll out short-term and high-impact projects particularly the Community Greening Weekend scheduled for May 2025.

Glossary

5Cs	The five capitals of the CMRC tool	KPKT	Kementerian Perumahan dan Kerajaan Tempatan (<i>Ministry of Housing and Local Government</i>)
APM	Angkatan Pertahanan Awam Malaysia (<i>Malaysia Civil Defence Force</i>)	MET	Jabatan Meteorologi (<i>Meteorological Department</i>)
CRA	Community Resilience Assessment	NADMA	National Disaster Management Authority
CRMC	Climate Resilience Measurement for Communities	NGO	Non-governmental organisation
DBKL	Kuala Lumpur City Hall (<i>Dewan Bandaraya Kuala Lumpur</i>)	RA	Residents Association
FGD	Focus group discussion	UCRP	Urban Climate Resilience Program
JKAS	Jabatan Kesihatan & Alam Sekitar (<i>Department of Health & Environment</i>)	ZMY	Zurich Malaysia
JKAWS	Jabatan Kejuruteraan Awam & Saliran (<i>Department of Civil Engineering & Drainage</i>)		
JKME	Jabatan Kejuruteraan Mekanikal & Elektrikal (<i>Department of Mechanical & Electrical Engineering</i>)		
JPLR	Jabatan Pembangunan Landskap & Rekreasi (<i>Department of Landscape Development & Recreation</i>)		
JPRB	Jabatan Perancangan Bandaraya (<i>Department of City Planning</i>)		
JPS	Jabatan Pengairan dan Saliran (<i>Department of Irrigation & Drainage</i>)		
KL	Kuala Lumpur		

**Community Resilience
Implementation Plan**
PPR Beringin, Kuala Lumpur
under the Urban Climate Resilience Program

UCRP Malaysia:
A collaboration
between



Powered by



Supported by

