

# 4 QUALITY EDUCATION



## ENSURE INCLUSIVE AND EQUITABLE QUALITY EDUCATION AND PROMOTE LIFELONG LEARNING OPPORTUNITIES

Kuala Lumpur aims to support continuous access to education at all levels and stage of its community by providing and improving its supportive facilities and infrastructures

### Kuala Lumpur Commitment to SDG 4

#### POLICIES AND PLANNING FRAMEWORK

#### Kuala Lumpur 2040

- IS1.3 Address the needs of the homeless including temporary shelter, upskilling, access to healthcare and database for a targeted solution
- IS2.3 Improve the access to education
- IS2.4 Build community hubs in every high density neighborhood which can be used as a library, learning and upskilling center
- IS2.5 Make neighborhood safe, age and disability-friendly
- IS1.6 Drive entrepreneurship development for urban economic growth
- IS2.3A Provide a variety of affordable premises for entrepreneurs
- PR4.3 Provide low carbon community based facilities to encourage and ease the low carbon lifestyle among communities
- PR4.4 Intensify low carbon awareness and educational programs at community level
- SV2.1C Activate of parks and open spaces with environmental educational programs

#### ON-GOING PROJECTS AND PROGRAMMES



#### TARGETS

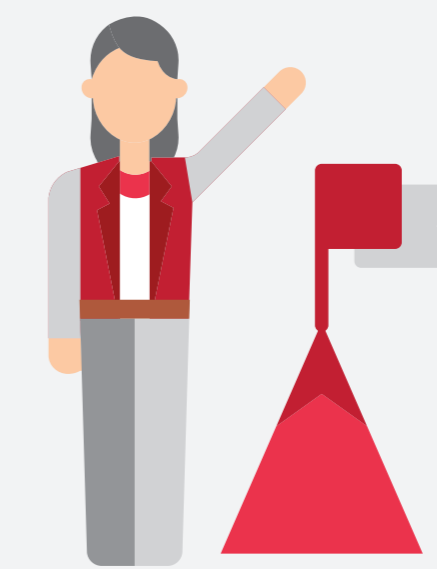
#### Early Education Institution

Improve 300 existing early education facilities at housing areas by



#### Entrepreneurship

1,070 new entrepreneurs by 2025



#### Sustainable Education

100% participation of schools in green school programs by 2030



### Kuala Lumpur Progress to SDG 4

#### 1 Kuala Lumpur Educational Facilities for All

Provisions of preschools and social welfare facilities such as care centers for the disabled, senior citizen activity centers (PAWE) and community rehabilitation organizations are mostly aided by the Federal Government and located in affordable housing areas

Primary and secondary schools are located in the city center as well as neighborhoods

Pre-school Facilities <b>261</b>		Primary Schools <b>174</b>	
Secondary Schools <b>103</b>		Care Centres for the Disabled (OKU) <b>10</b>	
Community Rehabilitation Organization (PPDK) <b>10</b>		Senior Citizen Activity Center (PAWE) <b>6</b>	
Childrens' Institution <b>4</b>		Childrens' Activity Center <b>3</b>	

#### 2 Entrepreneurial Opportunities

Kuala Lumpur City Hall collaborates with various agencies and stakeholders to facilitate job creation and entrepreneurial upskilling among youths as part of its job creation and economic resilience efforts

